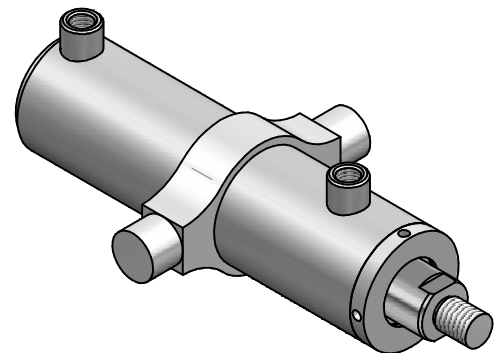
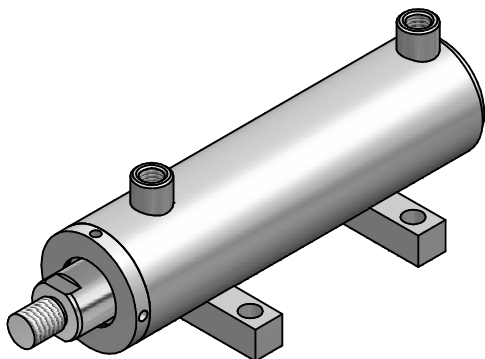


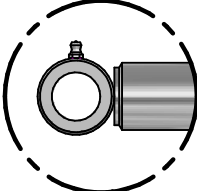
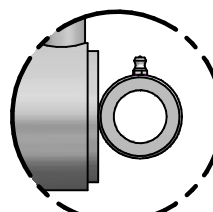
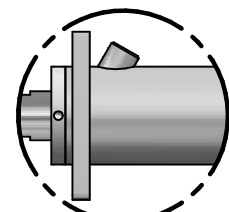
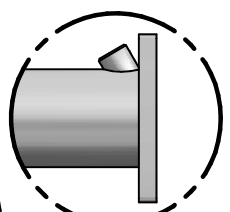
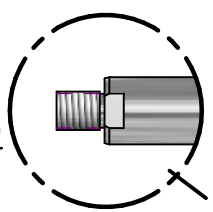
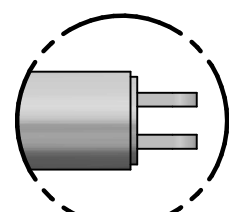
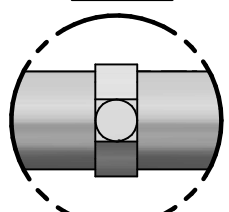
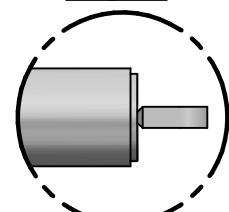
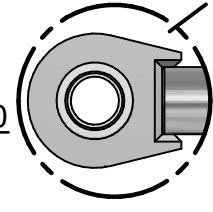
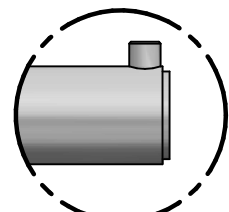
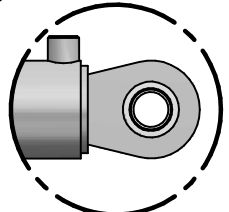
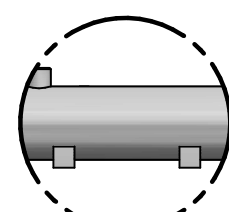
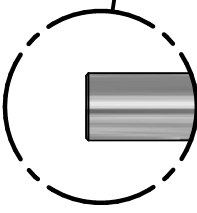
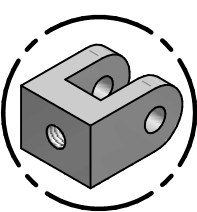
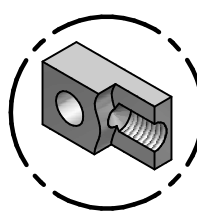
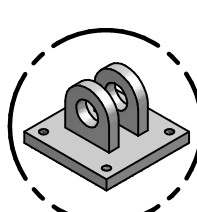
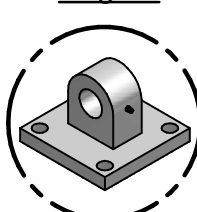
# Vérins hydrauliques industriels

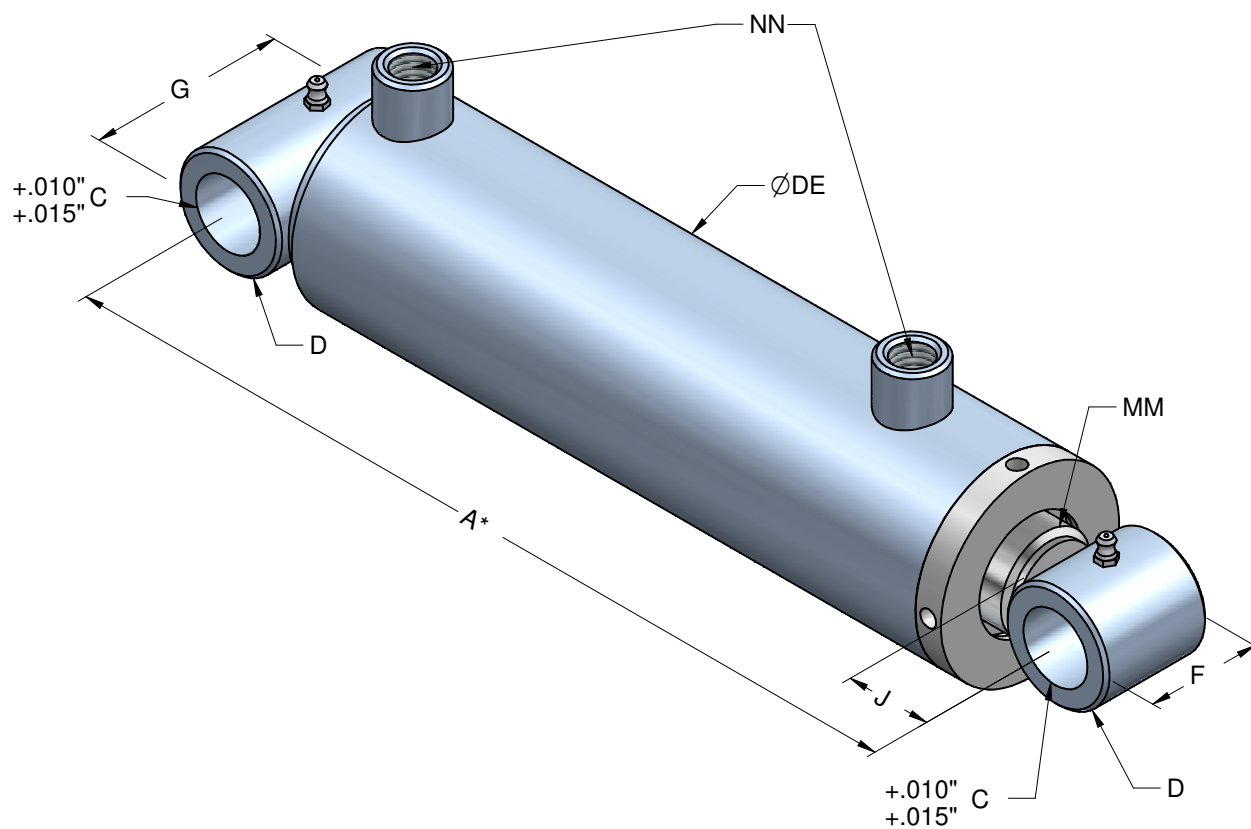


# Industrial Hydraulic Cylinders



# Table des matières / Contents

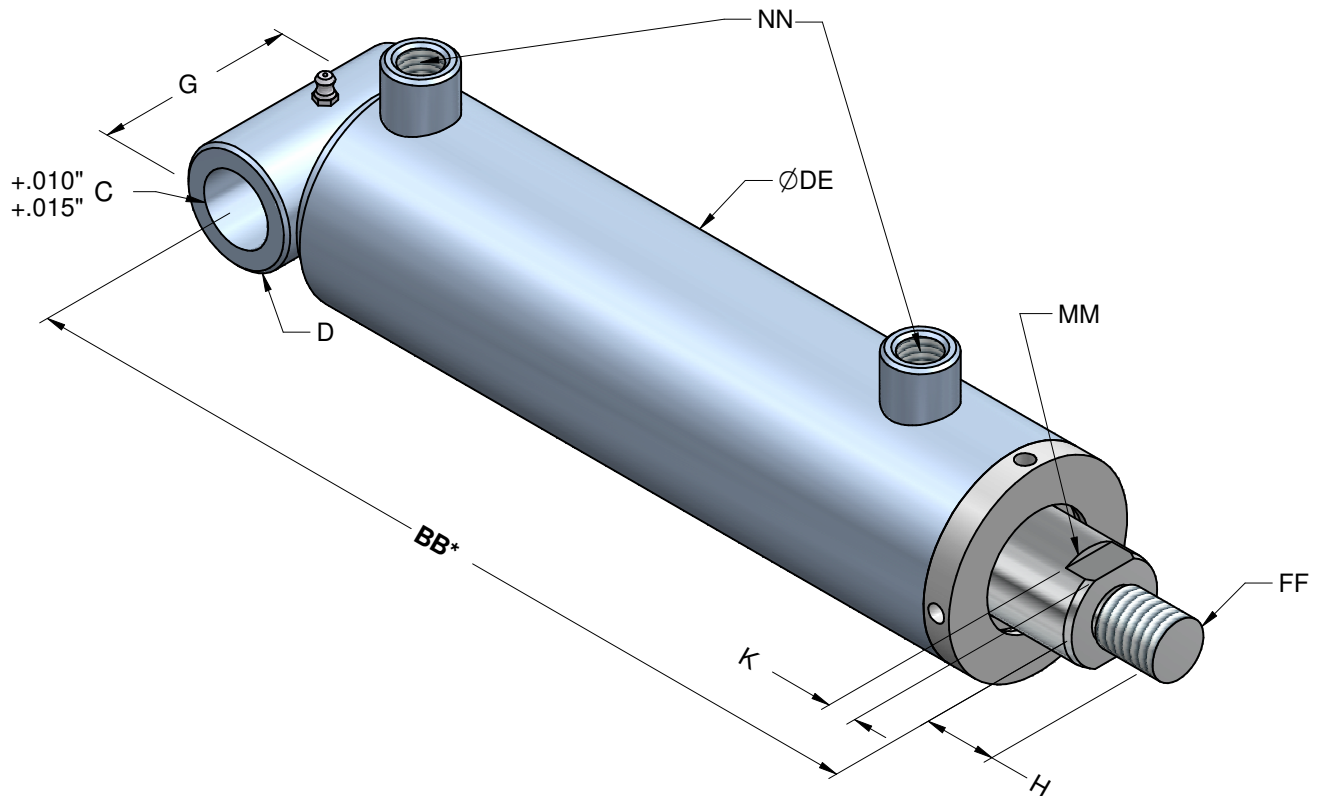
 R-x1 Page 2	 R-1x Page 2	 R-3x Page 4	 R-4x Page 5
 R-x2 Page 3-9	 R-5x Page 6	 R-6x Page 7	 R-7x Page 8
 R-x9 Page 10	 R-10x Page 11	 R-9x Page 10	 R-8x Page 9
 R-x10 Page 11	 Tenon Femelle/ Female Rod Clevis Page 12	 Tenon Mâle/ Male Rod Clevis Page 13	 Attache Femelle/ Eye Bracket Page 14
	 Attache Mâle/ Eye Bracket Page 15		



\* + Course/Stroke

Alésage/ Bore	1 1/2"	2"	2 1/2"	3"	3 1/2"	4"	4 1/2"	5"	6"	7"	8"	10"
A*	7"	7 3/4"	9"	9"	10 1/4"	10 3/4"	11"	12 1/4"	13 3/4"	14 1/4"	15 3/8"	17 7/8"
C	5/8"	3/4"	7/8"	1"	1 1/4"	1 1/2"	1 1/2"	1 3/4"	2"	2 1/4"	2 1/2"	3"
D	1"	1 1/4"	1 1/2"	1 1/2"	2"	2 1/2"	2 1/2"	3"	3 1/4"	3 5/8"	4"	4 1/2"
DE	1 7/8"	2 1/2"	3"	3 1/2"	4"	4 1/2"	5 1/4"	5 3/4"	6 3/4"	7 3/4"	9"	11"
F	1 1/4"	1 1/2"	1 3/4"	2"	2 1/4"	2 1/2"	3"	3 1/4"	3 1/4"	3 3/4"	5"	6"
G	2 1/4"	2 1/2"	3"	3 1/2"	4"	4 1/2"	5 1/4"	5 3/4"	7"	8"	9"	12"
J	1 7/8"	1 5/8"	2 1/4"	2 1/4"	2 1/2"	2 1/2"	2 1/2"	2 1/2"	3 1/4"	3 3/8"	4 1/4"	5"
MM	3/4"	1"	1 1/4"	1 1/2"	1 3/4"	2"	2 1/4"	2 1/2"	2 1/2"	3"	4"	5"
NN	3/8" Npt SAE#6	3/8" Npt SAE#6	1/2" Npt SAE#8	1/2" Npt SAE#8	1/2" Npt SAE#8	3/4" Npt SAE#12	3/4" Npt SAE#12	1" Npt SAE#16	1" Npt SAE#16	1 1/4" Npt SAE#20	1 1/4" Npt SAE#20	1 1/2" Npt SAE#24

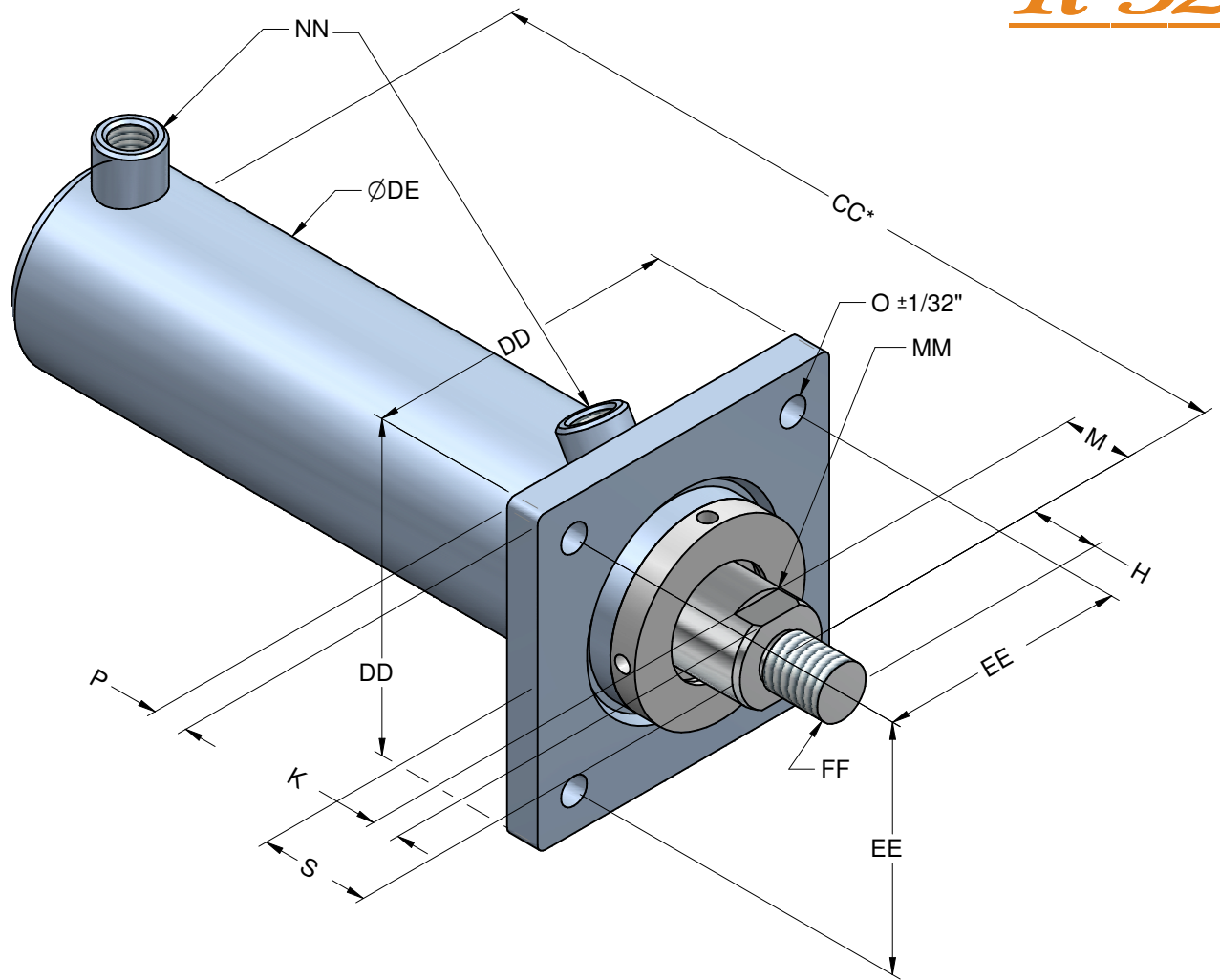
## DIMENSIONS



\* + Course/Stroke

Alésage/ Bore	1 1/2"	2"	2 1/2"	3"	3 1/2"	4"	4 1/2"	5"	6"	7"	8"	10"
A*	7"	7 3/4"	9"	9"	10 1/4"	10 3/4"	11"	12 1/4"	13 3/4"	14 1/4"	15 3/8"	17 7/8"
C	5/8"	3/4"	7/8"	1"	1 1/4"	1 1/2"	1 1/2"	1 3/4"	2"	2 1/4"	2 1/2"	3"
D	1"	1 1/4"	1 1/2"	1 1/2"	2"	2 1/2"	2 1/2"	3"	3 1/4"	3 5/8"	4"	4 1/2"
DE	1 7/8"	2 1/2"	3"	3 1/2"	4"	4 1/2"	5 1/4"	5 3/4"	6 3/4"	7 3/4"	9"	11"
F	1 1/4"	1 1/2"	1 3/4"	2"	2 1/4"	2 1/2"	3"	3 1/4"	3 1/4"	3 3/4"	5"	6"
G	2 1/4"	2 1/2"	3"	3 1/2"	4"	4 1/2"	5 1/4"	5 3/4"	7"	8"	9"	12"
J	1 7/8"	1 5/8"	2 1/4"	2 1/4"	2 1/2"	2 1/2"	2 1/2"	2 1/2"	3 1/4"	3 3/8"	4 1/4"	5"
MM	3/4"	1"	1 1/4"	1 1/2"	1 3/4"	2"	2 1/4"	2 1/2"	2 1/2"	3"	4"	5"
NN	3/8" Npt SAE#6	3/8" Npt SAE#6	1/2" Npt SAE#8	1/2" Npt SAE#8	1/2" Npt SAE#8	3/4" Npt SAE#12	3/4" Npt SAE#12	1" Npt SAE#16	1" Npt SAE#16	1 1/4" Npt SAE#20	1 1/4" Npt SAE#20	1 1/2" Npt SAE#24

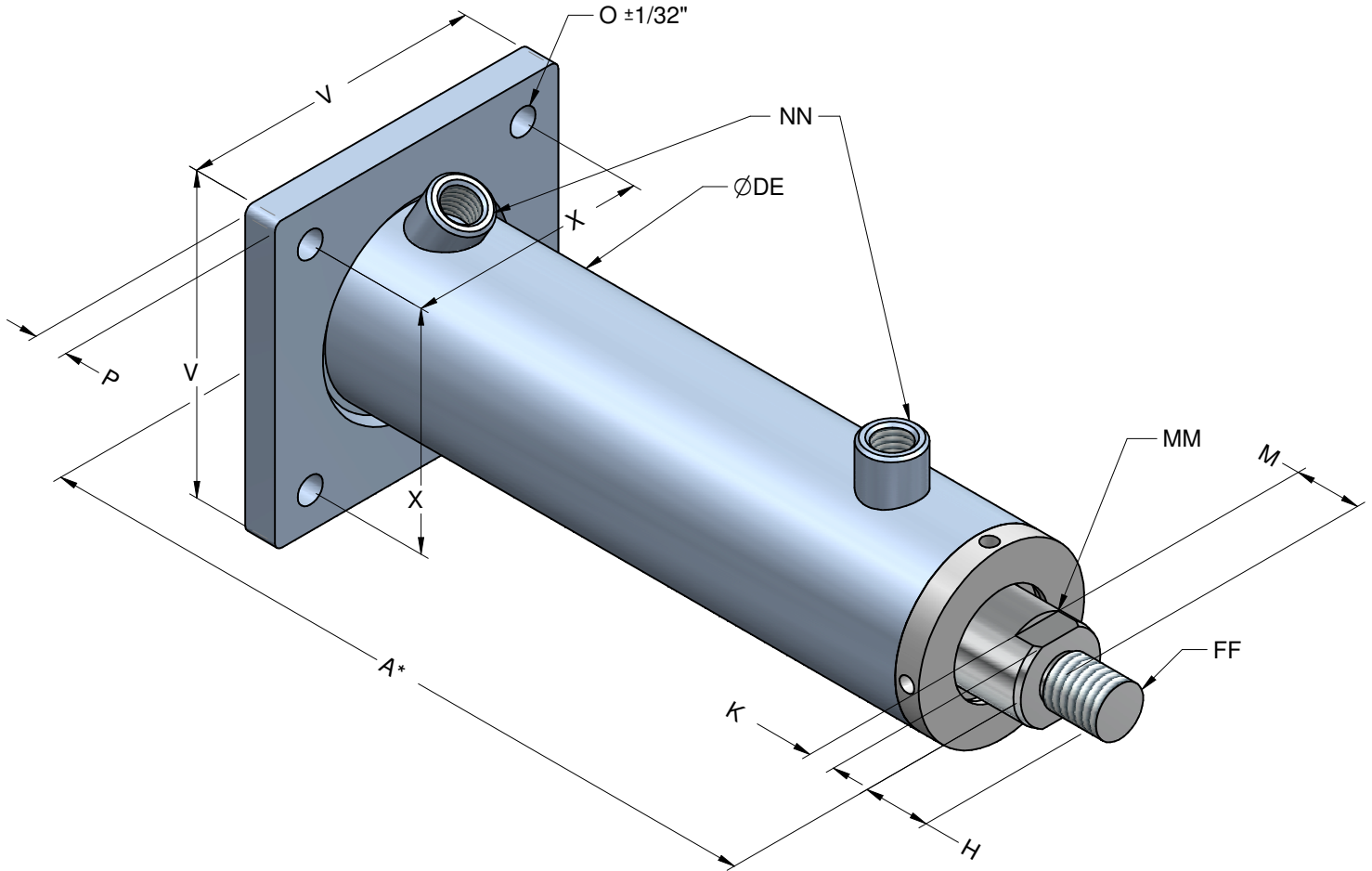
## DIMENSIONS



\* + Course/Stroke

Alésage/ Bore	1 1/2"	2"	2 1/2"	3"	3 1/2"	4"	4 1/2"	5"	6"	7"	8"	10"
CC*	5 1/8"	6 1/4"	7"	7"	7 3/4"	8"	8 1/2"	9 1/4"	9 7/8"	10 1/4"	10 3/8"	11 7/8"
DD	4"	4"	6"	6"	8"	8"	10"	10"	11"	12"	13"	15"
DE	1 7/8"	2 1/2"	3"	3 1/2"	4"	4 1/2"	5 1/4"	5 3/4"	6 3/4"	7 3/4"	9"	11"
EE	3"	3"	4 1/2"	4 1/2"	6"	6"	8"	8"	8 1/2"	9 1/2"	10"	11 1/2"
FF	5/8"-18	3/4"-16	7/8"-14	1"-14	1 1/4"-12	1 1/2"-12	1 3/4"-12	2"-12	2"-12	2 1/4"-12	2 1/2"-12	3"-12
H	3/4"	1"	1 1/4"	1 1/2"	1 3/4"	2"	2 1/4"	2 1/2"	2 1/2"	3"	3 1/2"	4"
K	3/8"	1/2"	1/2"	5/8"	5/8"	5/8"	3/4"	3/4"	3/4"	7/8"	7/8"	7/8"
M	1/2"	3/4"	3/4"	3/4"	3/4"	3/4"	1"	1"	1"	1 1/4"	1 1/4"	1 1/4"
MM	3/4"	1"	1 1/4"	1 1/2"	1 3/4"	2"	2 1/4"	2 1/2"	2 1/2"	3"	4"	5"
NN	3/8" Npt SAE#6	3/8" Npt SAE#6	1/2" Npt SAE#8	1/2" Npt SAE#8	1/2" Npt SAE#8	3/4" Npt SAE#12	3/4" Npt SAE#12	1" Npt SAE#16	1" Npt SAE#16	1 1/4" Npt SAE#20	1 1/4" Npt SAE#20	1 1/2" Npt SAE#24
O	3/8"	3/8"	1/2"	1/2"	5/8"	5/8"	5/8"	3/4"	1"	1 1/4"	1 1/2"	1 3/4"
P	1/2"	1/2"	5/8"	5/8"	3/4"	3/4"	7/8"	1"	1 1/4"	1 1/2"	1 1/2"	2"
S	1 1/2"	1 1/2"	1 1/2"	1 1/2"	1 1/2"	1 1/2"	1 3/4"	1 3/4"	1 7/8"	2 1/8"	2 1/8"	2 1/8"

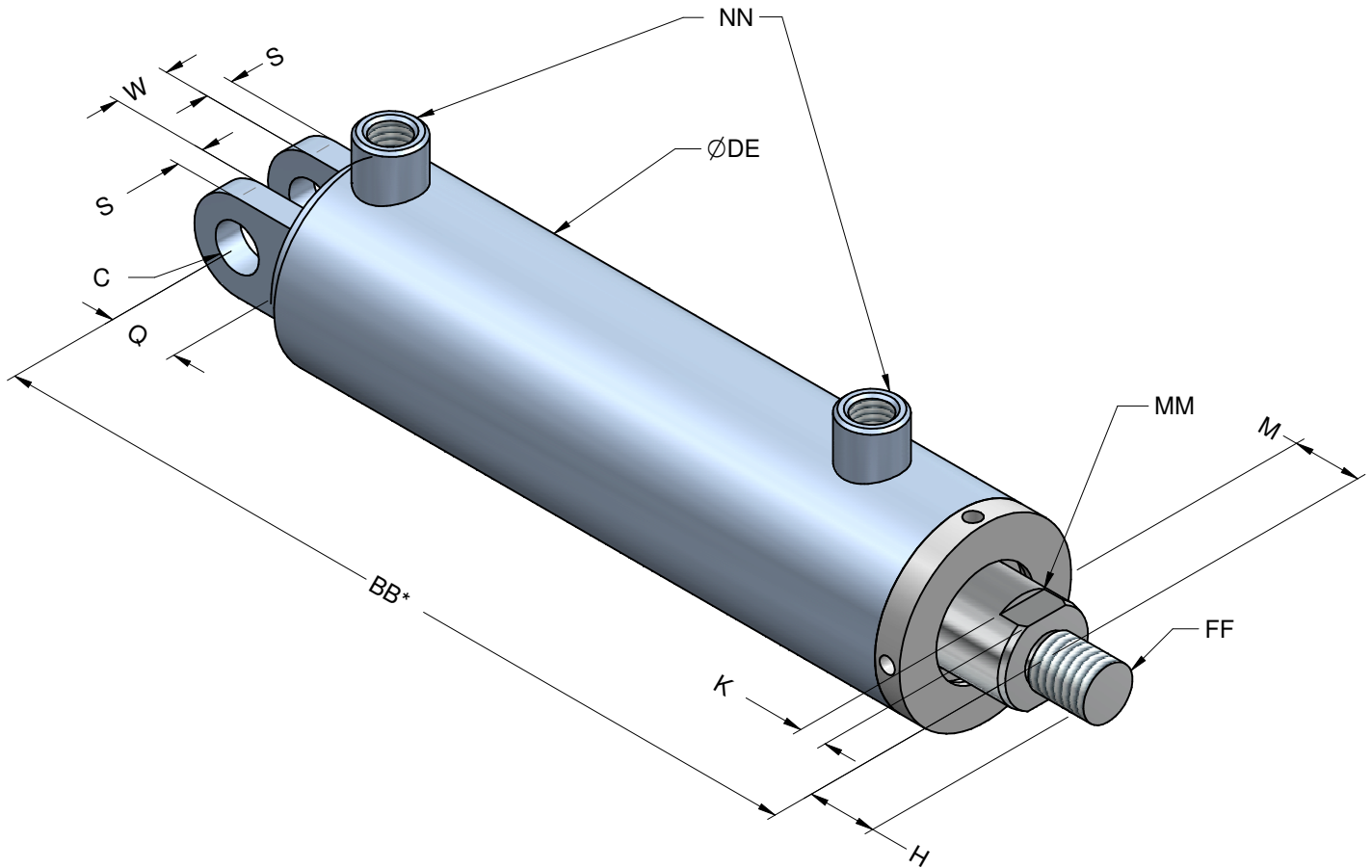
## DIMENSIONS



\* + Course/Stroke

Alésage/ Bore	1 1/2"	2"	2 1/2"	3"	3 1/2"	4"	4 1/2"	5"	6"	7"	8"	10"
A*	5 1/2"	6 1/4"	6 7/8"	6 7/8"	7 3/4"	8"	8 5/8"	9 3/4"	10 3/8"	11 1/8"	11 3/4"	14"
DE	1 7/8"	2 1/2"	3"	3 1/2"	4"	4 1/2"	5 1/4"	5 3/4"	6 3/4"	7 3/4"	9"	11"
FF	5/8"-18	3/4"-16	7/8"-14	1"-14	1 1/4"-12	1 1/2"-12	1 3/4"-12	2"-12	2"-12	2 1/4"-12	2 1/2"-12	3"-12
H	3/4"	1"	1 1/4"	1 1/2"	1 3/4"	2"	2 1/4"	2 1/2"	2 1/2"	3"	3 1/2"	4"
K	3/8"	1/2"	1/2"	5/8"	5/8"	5/8"	3/4"	3/4"	3/4"	7/8"	7/8"	7/8"
M	1/2"	3/4"	3/4"	3/4"	3/4"	3/4"	1"	1"	1"	1 1/4"	1 1/4"	1 1/4"
MM	3/4"	1"	1 1/4"	1 1/2"	1 3/4"	2"	2 1/4"	2 1/2"	2 1/2"	3"	4"	5"
NN	3/8" Npt SAE#6	3/8" Npt SAE#6	1/2" Npt SAE#8	1/2" Npt SAE#8	1/2" Npt SAE#8	3/4" Npt SAE#12	3/4" Npt SAE#12	1" Npt SAE#16	1" Npt SAE#16	1 1/4" Npt SAE#20	1 1/4" Npt SAE#20	1 1/2" Npt SAE#24
O	3/8"	3/8"	1/2"	1/2"	5/8"	5/8"	5/8"	3/4"	1"	1 1/4"	1 1/2"	1 3/4"
P	1/2"	1/2"	5/8"	5/8"	3/4"	3/4"	7/8"	1"	1 1/4"	1 1/2"	1 1/2"	2"
V	4"	4"	6"	6"	8"	8"	10"	10"	11"	12"	13"	15"
X	3"	3"	4 1/2"	4 1/2"	6"	6"	8"	8"	8 1/2"	9 1/2"	10"	11 1/2"

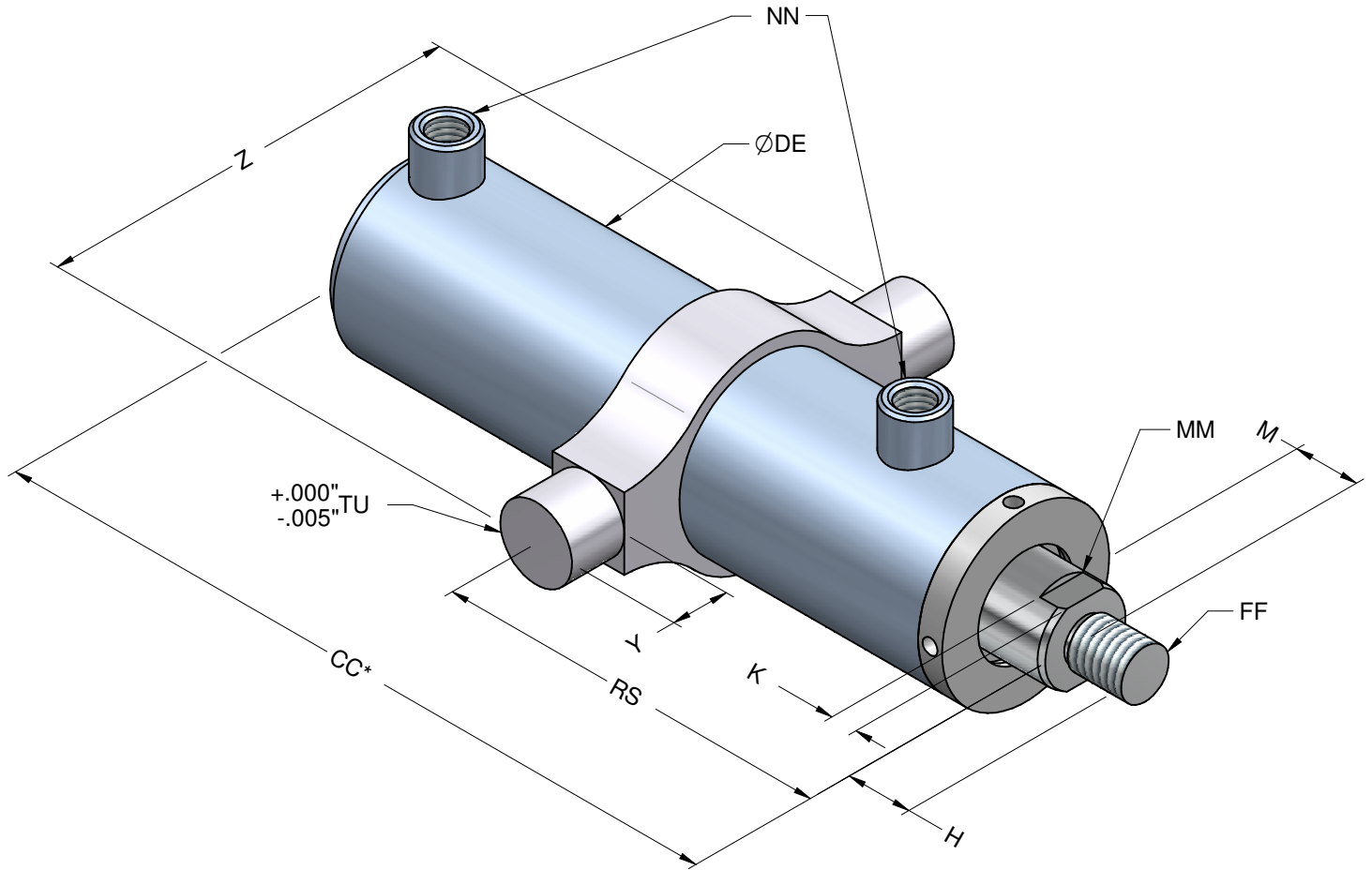
## DIMENSIONS



\* + Course/Stroke

Alésage/ Bore	1 1/2"	2"	2 1/2"	3"	3 1/2"	4"	4 1/2"	5"	6"	7"	8"	10"
BB*	6 1/2"	7 1/4"	8"	8 1/4"	9 1/4"	9 3/4"	10 1/2"	11 3/4"	12 3/8"	13 5/8"	15"	17 1/2"
C	5/8"	3/4"	7/8"	1"	1 1/4"	1 1/2"	1 1/2"	1 3/4"	2"	2 1/4"	2 1/2"	3"
DE	1 7/8"	2 1/2"	3"	3 1/2"	4"	4 1/2"	5 1/4"	5 3/4"	6 3/4"	7 3/4"	9"	11"
FF	5/8"-18	3/4"-16	7/8"-14	1"-14	1 1/4"-12	1 1/2"-12	1 3/4"-12	2"-12	2"-12	2 1/4"-12	2 1/2"-12	3"-12
H	3/4"	1"	1 1/4"	1 1/2"	1 3/4"	2"	2 1/4"	2 1/2"	2 1/2"	3"	3 1/2"	4"
K	3/8"	1/2"	1/2"	5/8"	5/8"	5/8"	3/4"	3/4"	3/4"	7/8"	7/8"	7/8"
M	1/2"	3/4"	3/4"	3/4"	3/4"	3/4"	1"	1"	1"	1 1/4"	2 3/8"	2 7/8"
MM	3/4"	1"	1 1/4"	1 1/2"	1 3/4"	2"	2 1/4"	2 1/2"	2 1/2"	3"	4"	5"
NN	3/8" Npt SAE#6	3/8" Npt SAE#6	1/2" Npt SAE#8	1/2" Npt SAE#8	1/2" Npt SAE#8	3/4" Npt SAE#12	3/4" Npt SAE#12	1" Npt SAE#16	1" Npt SAE#16	1 1/4" Npt SAE#20	1 1/4" Npt SAE#20	1 1/2" Npt SAE#24
Q	1 3/8"	1"	1 1/4"	1 1/2"	1 3/4"	2"	2 1/4"	2 1/2"	2 1/2"	3"	3 1/2"	4"
S	1/2"	1/2"	1/2"	1/2"	5/8"	3/4"	1"	1 1/4"	1 1/4"	1 1/2"	1 1/2"	2"
W	13/16"	1 1/16"	1 5/16"	1 5/8"	1 5/8"	2 1/8"	2 1/8"	2 5/8"	2 5/8"	3 1/8"	3 1/8"	4 1/8"

## DIMENSIONS

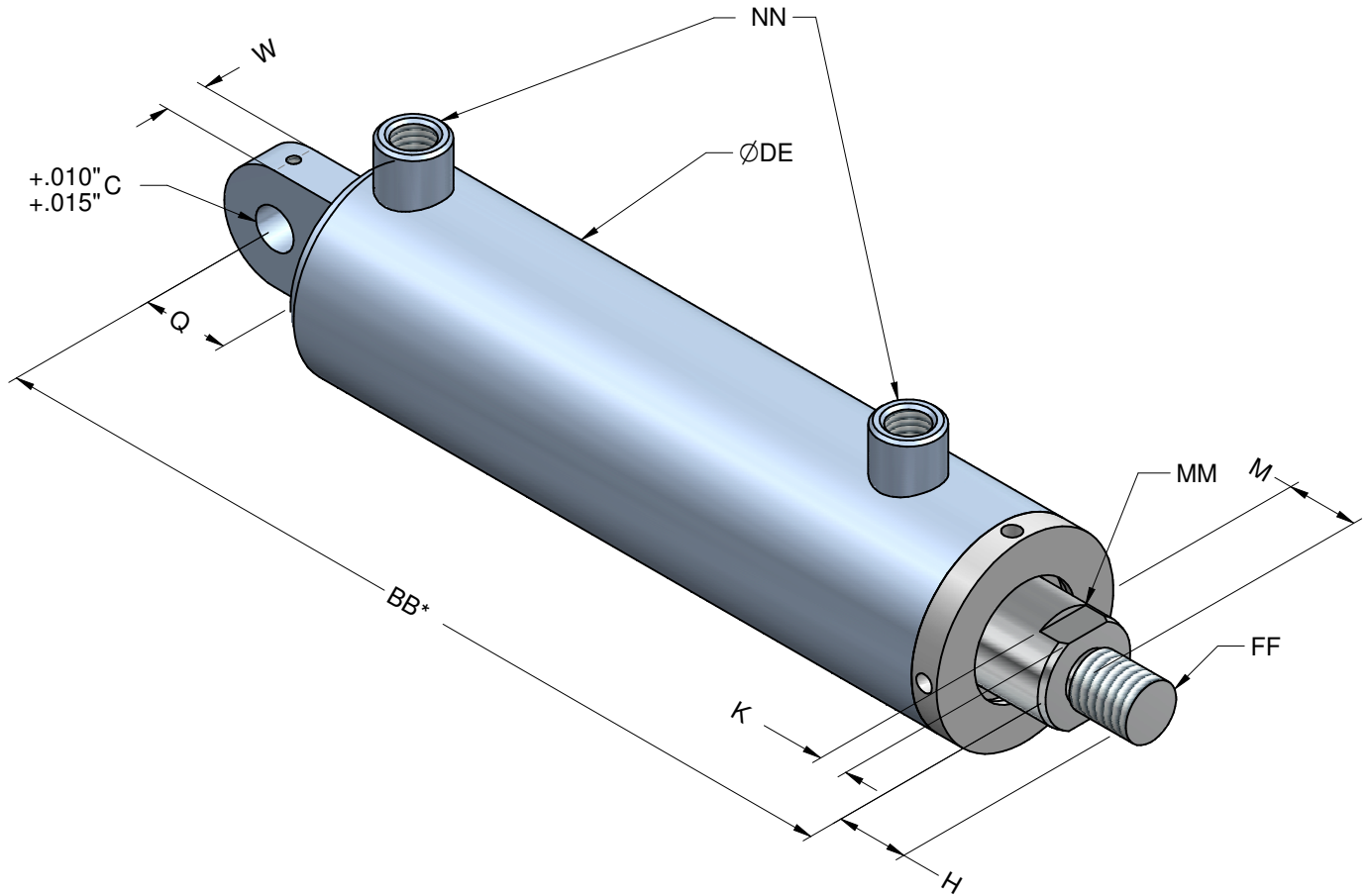


\* + Course/Stroke

Alésage/ Bore	1 1/2"	2"	2 1/2"	3"	3 1/2"	4"	4 1/2"	5"	6"	7"	8"	10"
CC*	5 1/2"	6 1/4"	7"	7"	7 3/4"	8"	8 1/2"	9 1/4"	9 7/8"	10 1/4"	10 3/8"	10 7/8"
DE	1 7/8"	2 1/2"	3"	3 1/2"	4"	4 1/2"	5 1/4"	5 3/4"	6 3/4"	7 3/4"	9"	11"
FF	5/8"-18	3/4"-16	7/8"-14	1"-14	1 1/4"-12	1 1/2"-12	1 3/4"-12	2"-12	2"-12	2 1/4"-12	2 1/2"-12	3"-12
H	3/4"	1"	1 1/4"	1 1/2"	1 3/4"	2"	2 1/4"	2 1/2"	2 1/2"	3"	3 1/2"	4"
K	3/8"	1/2"	1/2"	5/8"	5/8"	5/8"	3/4"	3/4"	3/4"	7/8"	7/8"	7/8"
M	7/8"	3/4"	3/4"	3/4"	3/4"	3/4"	1"	1"	1"	1 1/4"	1 1/4"	1 1/4"
MM	3/4"	1"	1 1/4"	1 1/2"	1 3/4"	2"	2 1/4"	2 1/2"	2 1/2"	3"	4"	5"
NN	3/8" Npt SAE#6	3/8" Npt SAE#6	1/2" Npt SAE#8	1/2" Npt SAE#8	1/2" Npt SAE#8	3/4" Npt SAE#12	3/4" Npt SAE#12	1" Npt SAE#16	1" Npt SAE#16	1 1/4" Npt SAE#20	1 1/4" Npt SAE#20	1 1/2" Npt SAE#24
RS	4 1/8"	4"	4 3/4"	5"	5 1/2"	7"	7"	8"	8"	8"	8 1/2"	8 1/2"
TU	1"	1 1/4"	1 3/8"	1 5/8"	1 3/4"	1 3/4"	1 3/4"	2"	2"	2 1/2"	2 1/2"	3 1/2"
Y	1"	1 1/4"	1 3/8"	1 5/8"	1 3/4"	1 3/4"	1 3/4"	2"	2"	2 1/2"	2 1/2"	3 1/2"
Z	5"	5 7/8"	6 3/4"	7 3/4"	8 1/2"	9"	9 3/4"	11"	12"	14 1/4"	15 1/4"	20"

## DIMENSIONS

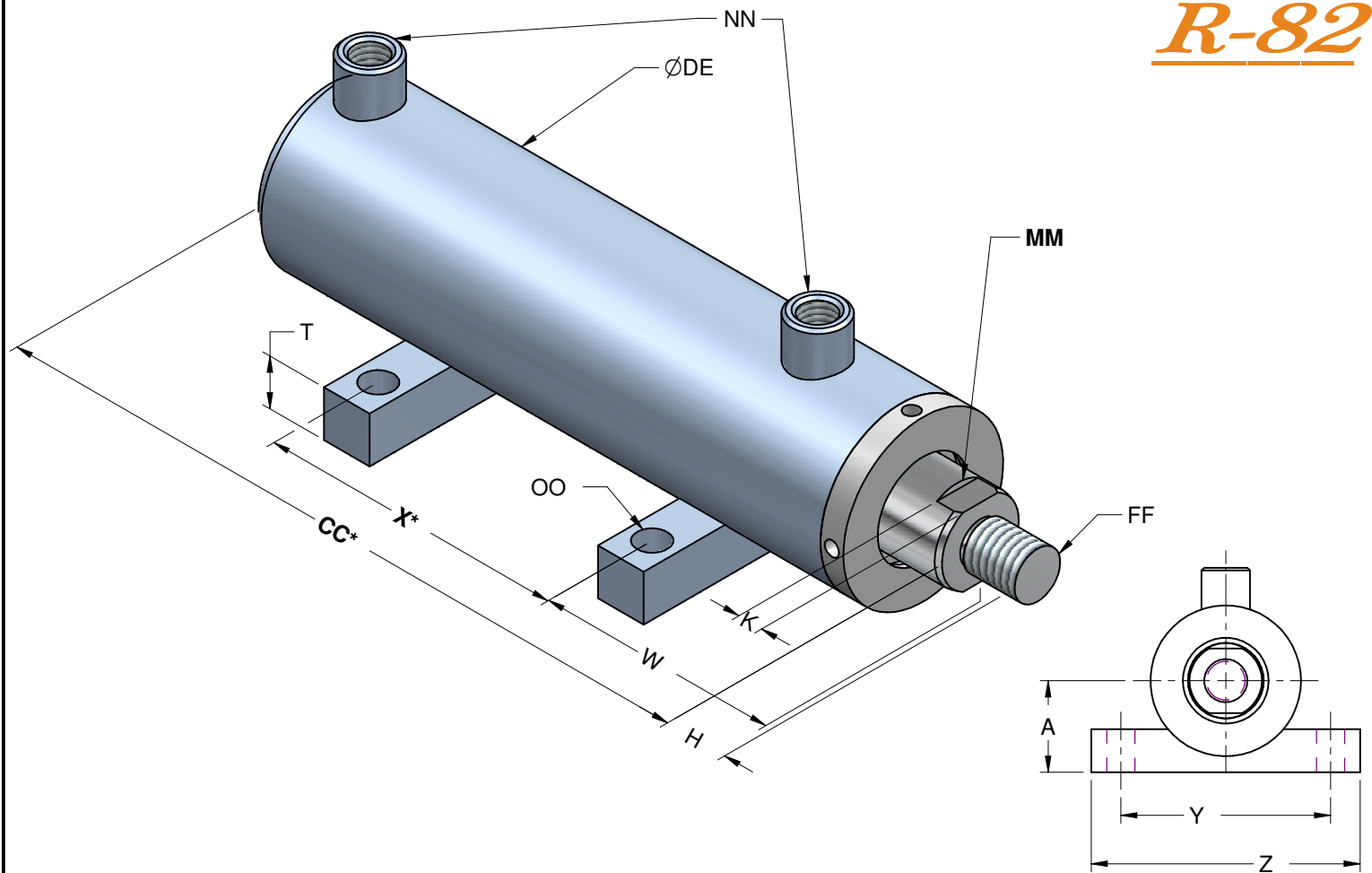




\* + Course/Stroke

Alésage/ Bore	1 1/2"	2"	2 1/2"	3"	3 1/2"	4"	4 1/2"	5"	6"	7"	8"	10"
BB*	6 1/2"	7 1/4"	8"	8 1/4"	9 1/4"	9 3/4"	10 1/2"	11 3/4"	12 3/8"	13 5/8"	15"	17 1/2"
C	5/8"	3/4"	7/8"	1"	1 1/4"	1 1/2"	1 1/2"	1 3/4"	2"	2 1/4"	2 1/2"	3"
DE	1 7/8"	2 1/2"	3"	3 1/2"	4"	4 1/2"	5 1/4"	5 3/4"	6 3/4"	7 3/4"	9"	11"
FF	5/8"-18	3/4"-16	7/8"-14	1"-14	1 1/4"-12	1 1/2"-12	1 3/4"-12	2"-12	2"-12	2 1/4"-12	2 1/2"-12	3"-12
H	3/4"	1"	1 1/4"	1 1/2"	1 3/4"	2"	2 1/4"	2 1/2"	2 1/2"	3"	3 1/2"	4"
K	3/8"	1/2"	1/2"	5/8"	5/8"	5/8"	3/4"	3/4"	3/4"	7/8"	7/8"	7/8"
M	1/2"	3/4"	3/4"	3/4"	3/4"	3/4"	1"	1"	1"	1 1/4"	2 3/8"	2 7/8"
MM	3/4"	1"	1 1/4"	1 1/2"	1 3/4"	2"	2 1/4"	2 1/2"	2 1/2"	3"	4"	5"
NN	3/8" Npt SAE#6	3/8" Npt SAE#6	1/2" Npt SAE#8	1/2" Npt SAE#8	1/2" Npt SAE#8	3/4" Npt SAE#12	3/4" Npt SAE#12	1" Npt SAE#16	1" Npt SAE#16	1 1/4" Npt SAE#20	1 1/4" Npt SAE#20	1 1/2" Npt SAE#24
Q	1 3/8"	1"	1 1/4"	1 1/2"	1 3/4"	2"	2 1/4"	2 1/2"	2 1/2"	3"	3 1/2"	4"
W	3/4"	1"	1 1/4"	1 1/2"	1 1/2"	2"	2"	2 1/2"	2 1/2"	3"	3"	4"

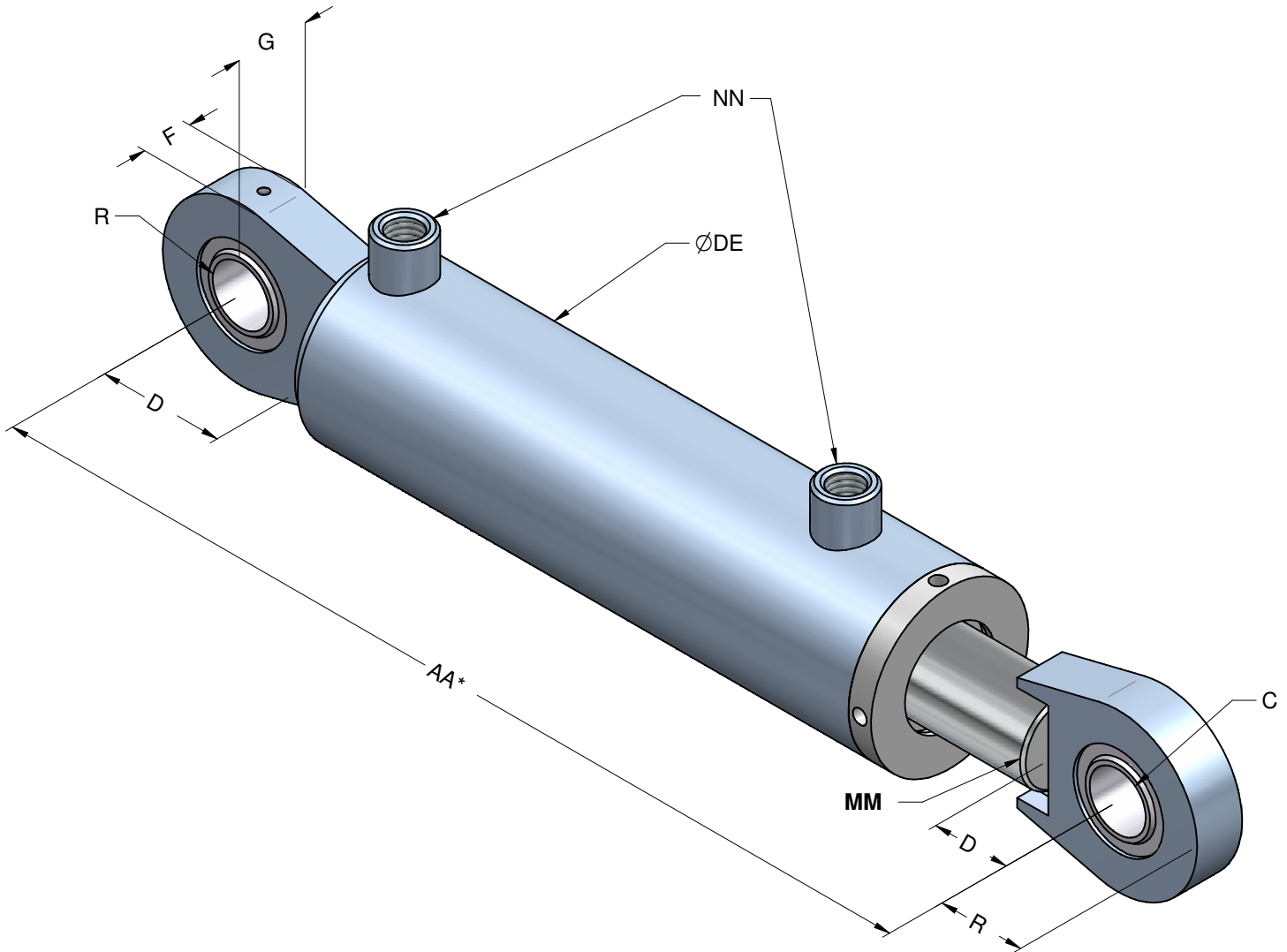
## DIMENSIONS



\* + Course/Stroke

Alésage/ Bore	1 1/2"	2"	2 1/2"	3"	3 1/2"	4"	4 1/2"	5"	6"	7"	8"	10"
A	1 3/8"	1 1/2"	1 7/8"	2 1/4"	2 1/2"	2 3/4"	3"	3 1/4"	4"	4 1/2"	5"	6 1/8"
CC*	5 12"	6 1/4"	6 7/8"	6 7/8"	7 3/4"	8"	8 5/8"	9 3/4"	10 3/8"	11 1/8"	11 3/4"	14"
DE	1 7/8"	2 1/2"	3"	3 1/2"	4"	4 1/2"	5 1/4"	5 3/4"	6 3/4"	7 3/4"	9"	11"
FF	5/8"-18	3/4"-16	7/8"-14	1"-14	1 1/4"-12	1 1/2"-12	1 3/4"-12	2"-12	2"-12	2 1/4"-12	2 1/2"-12	3"-12
H	3/4"	1"	1 1/4"	1 1/2"	1 3/4"	2"	2 1/4"	2 1/2"	2 1/2"	3"	3 1/2"	4"
K	3/8"	1/2"	1/2"	5/8"	5/8"	5/8"	3/4"	3/4"	3/4"	7/8"	7/8"	7/8"
M	7/8"	3/4"	3/4"	3/4"	3/4"	3/4"	1"	1"	1"	1 1/4"	1 1/4"	1 1/4"
MM	3/4"	1"	1 1/4"	1 1/2"	1 3/4"	2"	2 1/4"	2 1/2"	2 1/2"	3"	4"	5"
NN	3/8" Npt SAE#6	3/8" Npt SAE#6	1/2" Npt SAE#8	1/2" Npt SAE#8	1/2" Npt SAE#8	3/4" Npt SAE#12	3/4" Npt SAE#12	1" Npt SAE#16	1" Npt SAE#16	1 1/4" Npt SAE#20	1 1/4" Npt SAE#20	1 1/2" Npt SAE#24
OO	13/32"	15/32"	21/32"	25/32"	25/32"	1 1/32"	1 1/32"	1 1/32"	1 5/16"	1 9/16"	1 9/16"	1 9/16"
T	5/8"	3/4"	1"	1 1/4"	1 1/4"	1 1/2"	1 1/2"	1 1/2"	1 3/4"	2 1/4"	2 1/4"	2 1/4"
X*	2 1/8"	2 1/2"	2 3/4"	2 1/4"	3"	3"	3 1/4"	4"	4 1/4"	3 3/4"	4 3/8"	5 5/8"
W	1 15/16"	1 7/8"	2"	2 1/8"	2 1/8"	2 1/4"	2 1/2"	2 5/8"	2 3/4"	3 1/4"	3 1/4"	3 1/4"
Y	3 1/2"	4"	4 7/8"	5 1/2"	6"	6 3/4"	7 1/2"	8 1/4"	9 3/4"	11 1/4"	12 1/4"	15 7/8"
Z	4 1/2"	5"	6 1/4"	6 3/4"	7 1/2"	8 1/2"	9 1/4"	10"	12"	14"	15"	19"

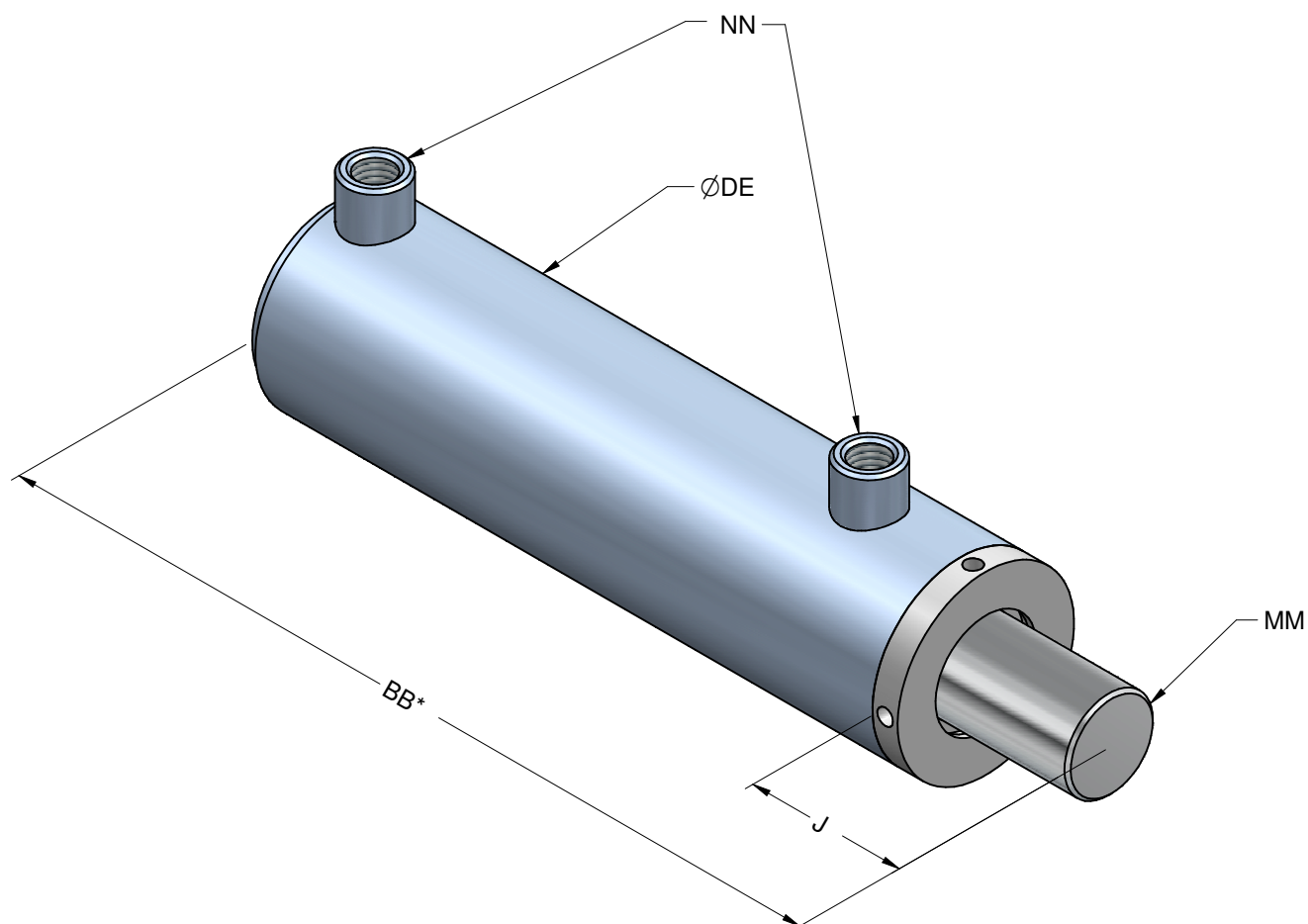
## DIMENSIONS



\* + Course/Stroke

Alésage/ Bore	1 1/2"	2"	2 1/2"	3"	3 1/2"	4"	4 1/2"	5"	6"	7"	8"	10"
AA*	8 1/8"	9 5/8"	10 1/2"	11"	13"	13 1/2"	14 1/4"	16"	17"	18"	20"	23"
C	0.6250" -0.0003"	0.7500" -0.0004"	1.0000" -0.0004"	1.2500" -0.0005"	1.5000" -0.0005"	1.7500" -0.0005"	2.0000" -0.0005"	2.5000" -0.0006"	2.5000" -0.0006"	3.0000" -0.0006"	3.5000" -0.0008"	4.0000" -0.0008"
DE	1 7/8"	2 1/2"	3"	3 1/2"	4"	4 1/2"	5 1/4"	5 3/4"	6 3/4"	7 3/4"	9"	11"
D	1 1/8"	1 3/8"	1 1/2"	1 3/4"	2 1/4"	2 3/8"	2 5/8"	3"	3"	3 1/2"	4"	4 1/2"
F	1/2"	5/8"	3/4"	1"	1 1/8"	1 3/8"	1 1/2"	1 7/8"	1 7/8"	2 1/4"	2 5/8"	3"
G	0.547"	0.656"	0.875"	1.093"	1.312"	1.531"	1.750"	2.187"	2.187"	2.625"	3.062"	3.500"
MM	3/4"	1"	1 1/4"	1 1/2"	1 3/4"	2"	2 1/4"	2 1/2"	2 1/2"	3"	4"	5"
NN	3/8" Npt SAE#6	3/8" Npt SAE#6	1/2" Npt SAE#8	1/2" Npt SAE#8	1/2" Npt SAE#8	3/4" Npt SAE#12	3/4" Npt SAE#12	1" Npt SAE#16	1" Npt SAE#16	1 1/4" Npt SAE#20	1 1/4" Npt SAE#20	1 1/2" Npt SAE#24
R	7/8"	1 1/4"	1 1/2"	1 3/4"	2"	2 3/8"	2 1/2"	3"	3"	3 1/2"	4 1/2"	5 1/2"

## DIMENSIONS

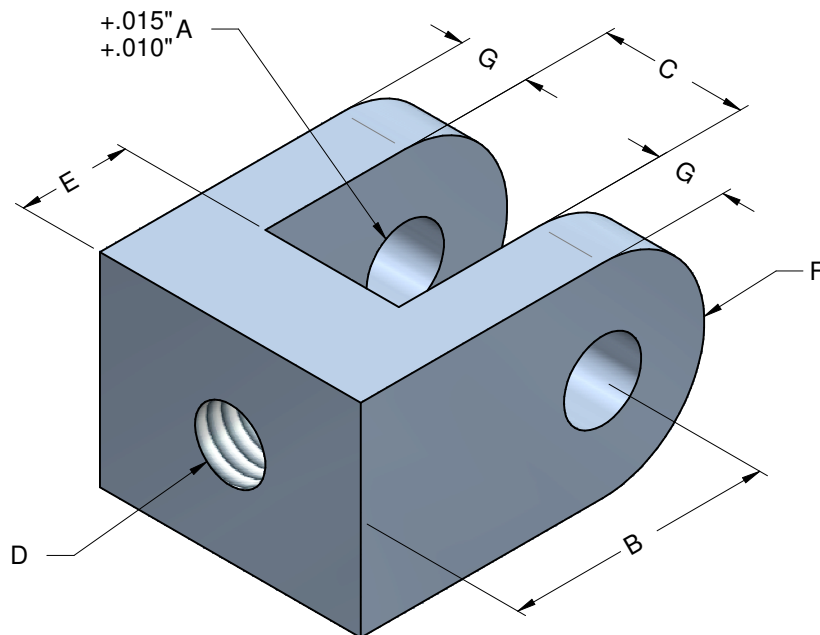


\* + Course/Stroke

Alésage/ Bore	1 1/2"	2"	2 1/2"	3"	3 1/2"	4"	4 1/2"	5"	6"	7"	8"	10"
BB*	6"	6 1/2"	7 1/2"	7 1/2"	8 1/4"	8 1/2"	8 3/4"	9 3/4"	11"	11 1/4"	12 1/8"	14 1/8"
DE	1 7/8"	2 1/2"	3"	3 1/2"	4"	4 1/2"	5 1/4"	5 3/4"	6 3/4"	7 3/4"	9"	11"
J	1 3/8"	1"	1 1/4"	1 1/4"	1 1/4"	1 1/4"	1 1/4"	1 1/2"	2 1/8"	2 1/4"	3"	3 1/2"
MM	3/4"	1"	1 1/4"	1 1/2"	1 3/4"	2"	2 1/4"	2 1/2"	2 1/2"	3"	4"	5"
NN	3/8" Npt SAE#6	3/8" Npt SAE#6	1/2" Npt SAE#8	1/2" Npt SAE#8	1/2" Npt SAE#8	3/4" Npt SAE#12	3/4" Npt SAE#12	1" Npt SAE#16	1" Npt SAE#16	1 1/4" Npt SAE#20	1 1/4" Npt SAE#20	1 1/2" Npt SAE#24

## DIMENSIONS

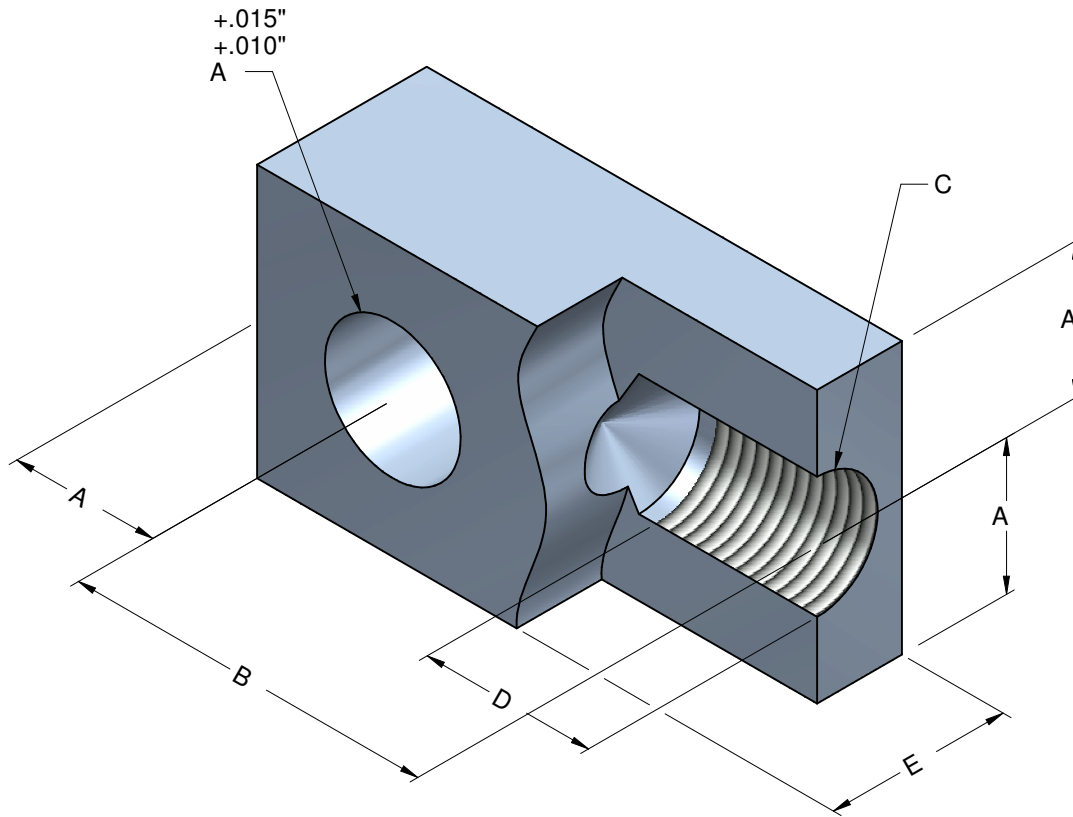
# *Tenon Femelle/ Female Rod Clevis*



Alésage/ Bore	1 1/2"	2"	2 1/2"	3"	3 1/2"	4"	4 1/2"	5"	6"	7"	8"	10"
N° Regy	150011	150021	150031	150041	150061	150071	150081	150091	150171	150101	150111	150121
N° Hyco	10050	10052	10053	10054	10055	10056	10057	10058	10059	10060	10061	10062
A	1/2"	3/4"	7/8"	1"	1 1/4"	1 1/2"	1 1/2"	1 3/4"	2"	2 1/4"	2 1/2"	3"
B	1 7/8"	2 3/8"	2 3/8"	3 1/8"	3 1/4"	4 1/8"	4 1/8"	5"	5"	6 1/4"	6 3/4"	7 3/4"
C	9/16"	1 5/16"	1 5/16"	1 5/8"	1 5/8"	2 1/8"	2 1/8"	2 5/8"	2 5/8"	3 1/8"	3 1/8"	4 1/8"
D	5/8"-18	3/4"-16	7/8"-14	1"-14	1 1/4"-12	1 1/2"-12	1 3/4"-12	2"-12	2"-12	2 1/4"-12	2 1/2"-12	3"-12
E	13/16"	1"	1 1/4"	1 1/2"	1 3/4"	2"	2 1/4"	2 1/2"	2 1/2"	3"	3 1/2"	4"
F	1/2"	1"	1"	1 1/4"	1 1/4"	1 3/4"	1 3/4"	2"	2"	2 3/8"	2 5/8"	3"
G	3/8"	5/8"	5/8"	3/4"	3/4"	1"	1"	1 1/4"	1 1/4"	1 1/2"	1 1/2"	1 1/2"

## **DIMENSIONS**

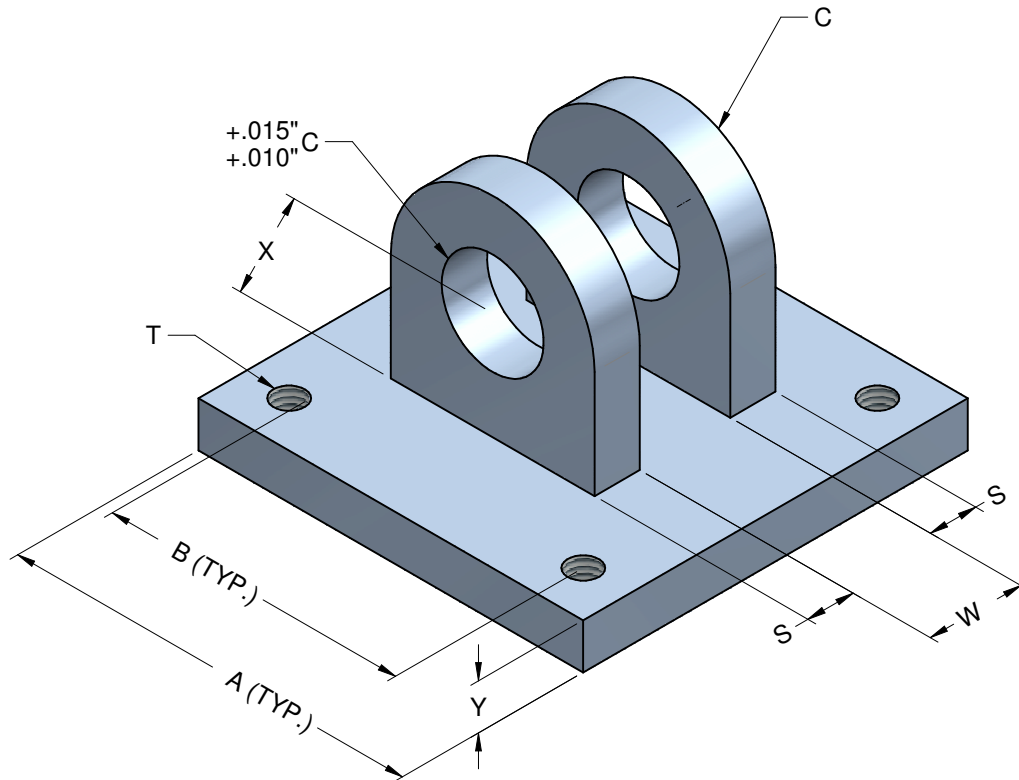
# *Tenon Male/ Male Rod Clevis*



Alésage/ Bore	1 1/2"	2"	2 1/2"	3"	3 1/2"	4"	4 1/2"	5"	6"	7"	8"	10"
N° Regy	170011	170021	170041	170051	170061	170071	170081	170091	170101	170111	170121	170131
N° Hyco	9900	9902	9903	9904	9905	9906	9907	9908	9909	9910	9911	9912
A	1/2"	3/4"	7/8"	1"	1 1/4"	1 1/2"	1 1/2"	1 3/4"	2"	2 1/4"	2 1/2"	3"
B	1 3/4"	2"	2 1/2"	2 3/4"	3 1/2"	3 1/2"	4"	4 1/2"	4 1/2"	5 3/4"	6 1/8"	7"
C	5/8"-18	3/4"-16	7/8"-14	1"-14	1 1/4"-12	1 1/2"-12	1 3/4"-12	2"-12	2"-12	2 1/4"-12	2 1/2"-12	3"-12
D	13/16"	1"	1 1/4"	1 1/2"	1 3/4"	2"	2 1/4"	2 1/2"	2 1/2"	3"	3 1/2"	4"
E	1"	1 1/4"	1 1/4"	1 1/2"	2"	2"	2 1/2"	2 1/2"	2 1/2"	3"	3 1/2"	4"

## **DIMENSIONS**

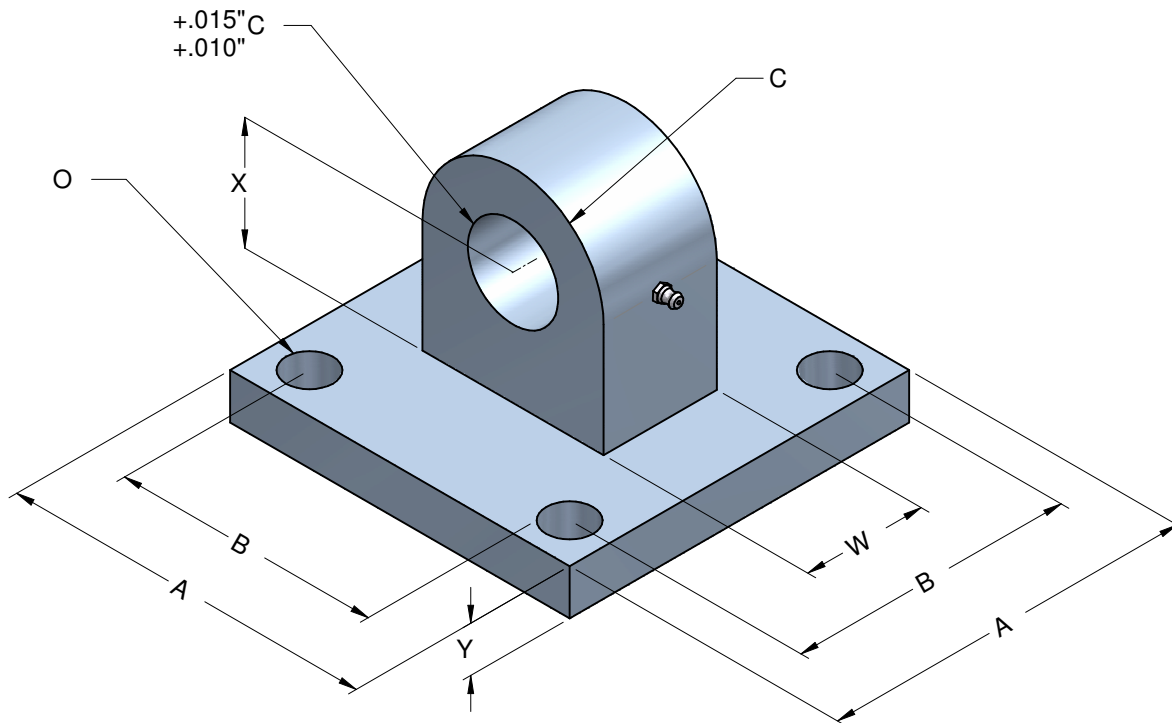
# Attache Femelle/ Clevis Bracket



Alésage/ Bore	1 1/2"	2"	2 1/2"	3"	3 1/2"	4"	4 1/2"	5"	6"	7"	8"	10"
N° Regy	10200	10201	10202	10203	10204	10205	10206	10207	10208	10209	10210	10211
N° Hyco	10200	10201	10202	10203	10204	10205	10206	10207	10208	10209	10210	10211
A	2 1/2"	3 1/2"	3 1/2"	4 1/2"	4 1/2"	5"	5"	6 1/2"	7 1/2"	8 1/2"	9 1/2"	12 3/4"
B	1 5/8"	2 1/2"	2 1/2"	3 1/4"	3 1/4"	3 3/4"	3 3/4"	5"	5 3/4"	6 1/2"	7 1/2"	9 1/2"
C	5/8"	3/4"	7/8"	1"	1 1/4"	1 1/2"	1 1/2"	1 3/4"	2"	2 1/4"	2 1/2"	3"
S	1/2"	5/8"	5/8"	3/4"	3/4"	1"	1"	1 1/4"	1 1/4"	1 1/2"	1 1/2"	2"
T	3/8"-24	1/2"-20	1/2"-20	5/8"-18	5/8"-18	5/8"-18	5/8"-18	7/8"-14	1"-14	1 1/8"-12	1 1/4"-12	1 3/4"-12
W	13/16"	1 1/16"	1 5/16"	1 5/8"	1 5/8"	2 1/8"	2 1/8"	2 5/8"	2 5/8"	3 1/8"	3 1/8"	4 1/8"
X	3/4"	1 1/4"	1 1/4"	1 1/2"	1 1/2"	2 1/8"	2 1/8"	2 1/4"	2 1/2"	3"	3 1/4"	4"
Y	3/8"	5/8"	5/8"	3/4"	3/4"	7/8"	7/8"	7/8"	1"	1"	1"	1 3/4"

## DIMENSIONS

# Attache Mâle/ Eye Bracket



Alésage/ Bore	1 1/2"	2"	2 1/2"	3"	3 1/2"	4"	4 1/2"	5"	6"	7"	8"	10"
N° Regy	10250-A	10251	10252	10253	10254	10255	10256	10257	10258	10259	10260	10261
N° Hyco	10250-A	10251	10252	10253	10254	10255	10256	10257	10258	10259	10260	10261
A	2 1/2"	3 1/2"	3 1/2"	4 1/2"	4 1/2"	5"	5"	6 1/2"	7 1/2"	8 1/2"	9 1/2"	12 3/4"
B	1 5/8"	2 1/2"	2 1/2"	3 1/4"	3 1/4"	3 3/4"	3 3/4"	5"	5 3/4"	6 1/2"	7 1/2"	9 1/2"
C	1/2"	3/4"	7/8"	1"	1 1/4"	1 1/2"	1 1/2"	1 3/4"	2"	2 1/4"	2 1/2"	3"
O	13/32"	17/32"	17/32"	21/32"	21/32"	21/32"	21/32"	29/32"	1 1/32"	1 5/32"	1 9/32"	1 25/32"
W	1/2"	1"	1 1/4"	1 1/2"	1 1/2"	2"	2"	2 1/2"	2 1/2"	3"	3"	4"
X	3/4"	1 1/4"	1 1/4"	1 1/2"	1 1/2"	2 1/8"	2 1/8"	2 1/4"	2 1/2"	3"	3 1/4"	4"
Y	3/8"	5/8"	5/8"	3/4"	3/4"	7/8"	7/8"	7/8"	1"	1"	1"	1 3/4"

## DIMENSIONS



# Comment rédiger une commande

## How to order

R-	A	B	C	D	E	F	G	H
----	---	---	---	---	---	---	---	---

A	Attache-Tige / Rod Clevis
1	Page 3
2	Page 4-10
9	Page 11
10	Page 12

B	Attache-Tube / Barrel Clevis
1	Page 3
3	Page 5
4	Page 6
5	Page 7
6	Page 8
7	Page 9
8	Page 10
9	Page 11
10	Page 12

C	Alésage / Bore
1 1/2"	1.5
2"	2
2 1/2"	2.5
3"	3
3 1/2"	3.5
4"	4
4 1/2"	4.5
5"	5
6"	6
7"	7
8"	8
10"	10

\* : Basé sur un facteur de sécurité de 3/1 en éclatement.

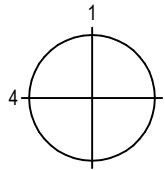
\* : Based on a safety factor of 3/1 on the bursting pressure.

D	Course / Stroke
---	-----------------

E	Tige / Rod
3/4"	0.75
1"	1
1 1/4"	1.25
1 1/2"	1.5
1 3/4"	1.75
2"	2
2 1/4"	2.25
2 1/2"	2.5
3	3
4	4
5	5

F	Coussin / Cushion
NC	Sans Coussin / Non-Cushioned
CR	Coussin à la tête / Cushion at Rod End
CB	Coussin au fond / Cushion at Bottom End
CC	Coussin aux deux bouts / Cushion at Both End

G	Type et grosseur des entrées d'huile / Type and Size of Ports
	NPT / SAE

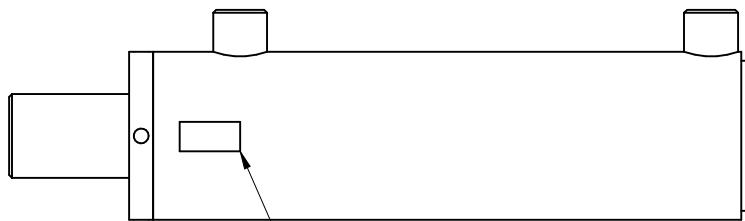
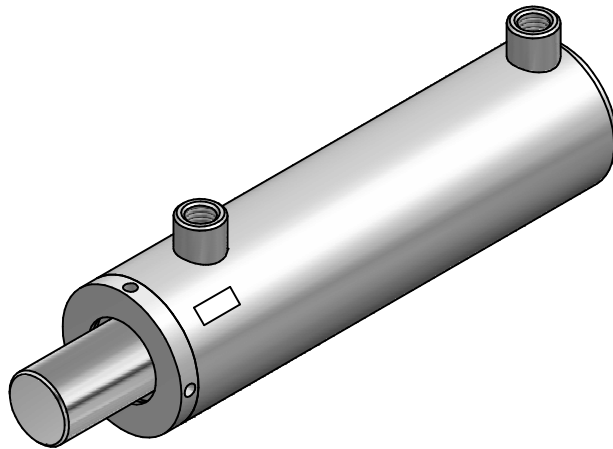
H	Position des entrées d'huile vus au bout de la tête (Goupille en position horizontale)	
	Position of Ports viewed from the Rod End (Pin in horizontal position)	

Pressions d'opération* / Working Pressure*	
Alésage / Bore	Pression / Pressure
1 1/2"	3000 PSI
2"	3000 PSI
2 1/2"	3000 PSI
3"	3000 PSI
3 1/2"	3000 PSI
4"	3000 PSI
4 1/2"	3000 PSI
5"	3000 PSI
6"	3000 PSI
7"	2700 PSI
8"	3000 PSI
10"	3000 PSI

Coussins / Cushions Ajouter à la longueur fermée / Add to closed length			
Alésage / Bore	Fond / Bottom	Tête / Gland	2 Bouts / Both End
1 1/2"	0"	3/4"	3/4"
2"	0"	1"	1"
2 1/2"	0"	1 1/4"	1 1/4"
3"	0"	1 1/4"	1 1/4"
3 1/2"	0"	1 1/2"	1 1/2"
4"	0"	1 1/2"	1 1/2"
4 1/2"	0"	1 1/2"	1 1/2"
5"	0"	1 1/2"	1 1/2"
6"	0"	1 1/2"	1 1/2"
7"	1/4"	1 1/2"	1 3/4"
8"	1"	2"	3"
10"	1"	2"	3"

# Identification des vérins hydrauliques

## Cylinders's identification



No. Régy / Regy's Number (Standard)  
No. du client / OEM (Option)  
Date + Séquence / Date + Sequence (Standard)  
Fabriqué au Canada / Made In Canada (Option)

1 1/2"  
(MAX)

3"  
(MAX)